



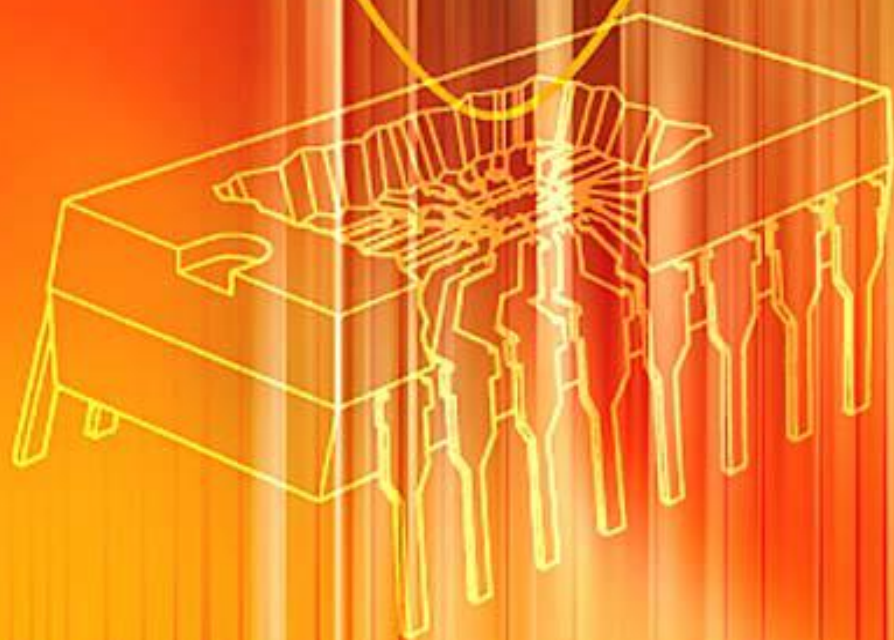
CONFORMS TO
IEE WIRING REGULATIONS
BS 7671:2001 (INCORPORATING
AMENDMENTS 1:2002 & 2:2004)

ADVANCED

ELECTRICAL INSTALLATION WORK

TREVOR LINSLEY

Matched to the requirements of the 2330 Level 3 Certificate in
Electrotechnical Technology from City & Guilds - Installation Route



FOURTH EDITION



Newnes